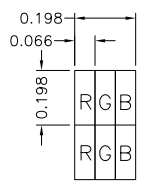
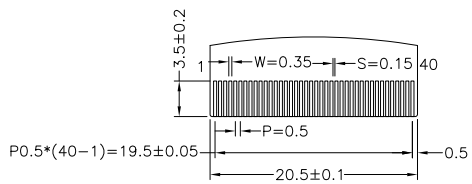


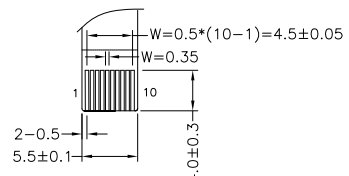
CTP PIN DESCRIPTION		TFT PIN DESCRIPTION	
PIN	SYMBOL	PIN	SYMBOL
1	VSS	1	LEDK
2	VCC	2	LEDA
3	SCL	3	GND
4	NC	4	VDD
5	SDA	5	RO
6	NC	6	R1
7	/RST	7	R2
8	NC	8	R3
9	/INT	9	R4
10	VSS	10	R5
		11	R6
		12	R7
		13	G0
		14	G1
		15	G2
		16	G3
		17	G4
		18	G5
		19	G6
		20	G7
		21	B0
		22	B1
		23	B2
		24	B3
		25	B4
		26	B5
		27	B6
		28	B7
		29	GND
		30	PCLK
		31	DISP
		32	HSYNC
		33	VSYNC
		34	DE
		35	NC
		36	GND
		37	XR
		38	YD
		39	XL
		40	YU



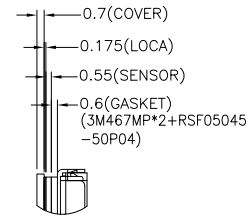
DETAIL A  
SCALE 40:1



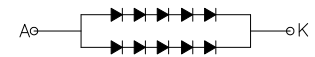
DETAIL B  
SCALE 2:1



DETAIL C  
SCALE 2:1



DETAIL D  
SCALE 2:1



BACKLIGHT CIRCUIT DIAGRAM

- NOTES FOR TFT:
1. DISPLAY TYPE: TFT/TRANSMISSIVE/NORMALLY WHITE
  2. VIEWING DIRECTION: 12 O'CLOCK
  3. OPERATING VOLTAGE: VCC=3.3V
  4. DRIVER IC: ST7282-G4-1L
  5. BACKLIGHT: 10-CHIP WHITE LED, If=40mA, Vf=14V~17V
  6. SURFACE TREATMENT: ANTI-GLARE

- NOTES FOR CTP:
1. 4.3 INCH PROJECTIVE CAPACITIVE TOUCH PANEL
  2. OPERATION VOLTAGE: VCC=3.3V
  3. COVER GLASS + SENSOR GLASS + FPCA
  4. RESOLUTION: 480 X 272 DOTS
  5. IC DRIVER: FT5446-P03 (SMT)
  6. MULTI FINGER: UP TO 5
  7. HARDNESS OF COVER SURFACE: 7H
  8. FIRMWARE FILE: MI0430CRP-C11 (FT5446-P03)\_FIRMWARE\_V09\_20200423

- OTHERS:
1. OPERATING TEMP.: -20°C ~ 70°C
  2. STORAGE TEMP.: -30°C ~ 80°C
  3. SURFACE LUMINANCE: 460CD/M<sup>2</sup>(TYP)
  4. THE SINGLE LAYER AREA OF FPC IS BENDABLE AND THE BENDING RADIUS MUST BE NOT LESS THAN 1.5mm
  5. GENERAL TOLERANCE: ±0.2mm
  6. RoHS COMPLIANT

**MIT** MULTI-INNO TECHNOLOGY CO., LTD.

DRAWN BY:	CAROL	2021.04.24		MODULE P/N:	MI0430AET-5CP3
CHECKED BY:			SCALE : 1/1	DESCRIPTION:	TFT + CTP MODULE
APPROVED BY:			UNIT: mm		
VERSION NO:	01		SHEET NO.: 1/1		

01	FIRST ISSUE	CAROL	2021.04.24
VER.	REVISED DESCRIPTION	REVISOR	DATE